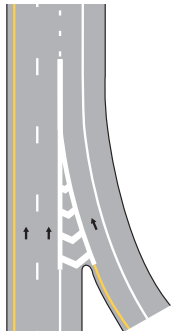

J. Interstate Driving

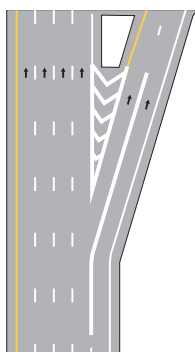
Entering the Interstate

Interstate and other limited access highways are usually reached by an entrance ramp and an acceleration lane. The entrance ramp provides access to the highway and the acceleration lane provides the opportunity to get up to the speed of the traffic already on the interstate or highway. When entering an interstate, the solid painted lines that divide the entrance and the interstate should not be crossed.



Exiting the Interstate

Move to the appropriate lane well before reaching the exit. Start slowing down as soon as you enter the deceleration lane and continue slowing to the posted advisory speed for the ramp. If you exit at the wrong place on an interstate, continue until you are off the exit ramp and look for a way to re-enter the interstate. Never stop and back up on any portion of the interstate.



Stopping

Stopping on the traveled portion of a highway is prohibited. Stopping on the shoulder is permitted only when your vehicle is disabled or in other emergencies. If you must stop on the shoulder of the interstate or highway, turn on your emergency flashers to warn other drivers and stay inside your vehicle if you can. The extremely high speed of traffic makes standing or walking along an interstate highway very dangerous.

K. Funeral Processions

Vehicles driven in a funeral procession must have headlights turned on and hazard lights flashing in order to be granted the right-of-way.

A vehicle driven in a funeral procession facing a red signal may continue through or make a turn at an intersection.

Other vehicles, even if they have a green signal, must yield the right-of-way to the vehicles in the funeral procession until all vehicles in the procession have passed, unless they can safely proceed without crossing the path of the procession.

L. Slow Moving Vehicles

You may encounter slow moving vehicles on the roadways, including bicycles, horse-drawn vehicles, and farm vehicles. Some of these vehicles may have the slow-moving emblem (shown) on the back of the vehicle to help warn you they are only going 25 mph or less.



Here are some tips for driving alongside slow moving vehicles:

- Be constantly aware of any vehicles that might be traveling at a much slower speed.
- Adjust the speed and position of your vehicle accordingly.
- Only pass the slow moving vehicle when it is safe to do so.

If you must follow the slower moving vehicle waiting for a safe time to pass, use your emergency flashers to help warn others coming up behind you.