



UNIVERSITY *of* MARYLAND
SCHOOL OF MEDICINE

Maryland Older Driver Crashes, 2007-2011

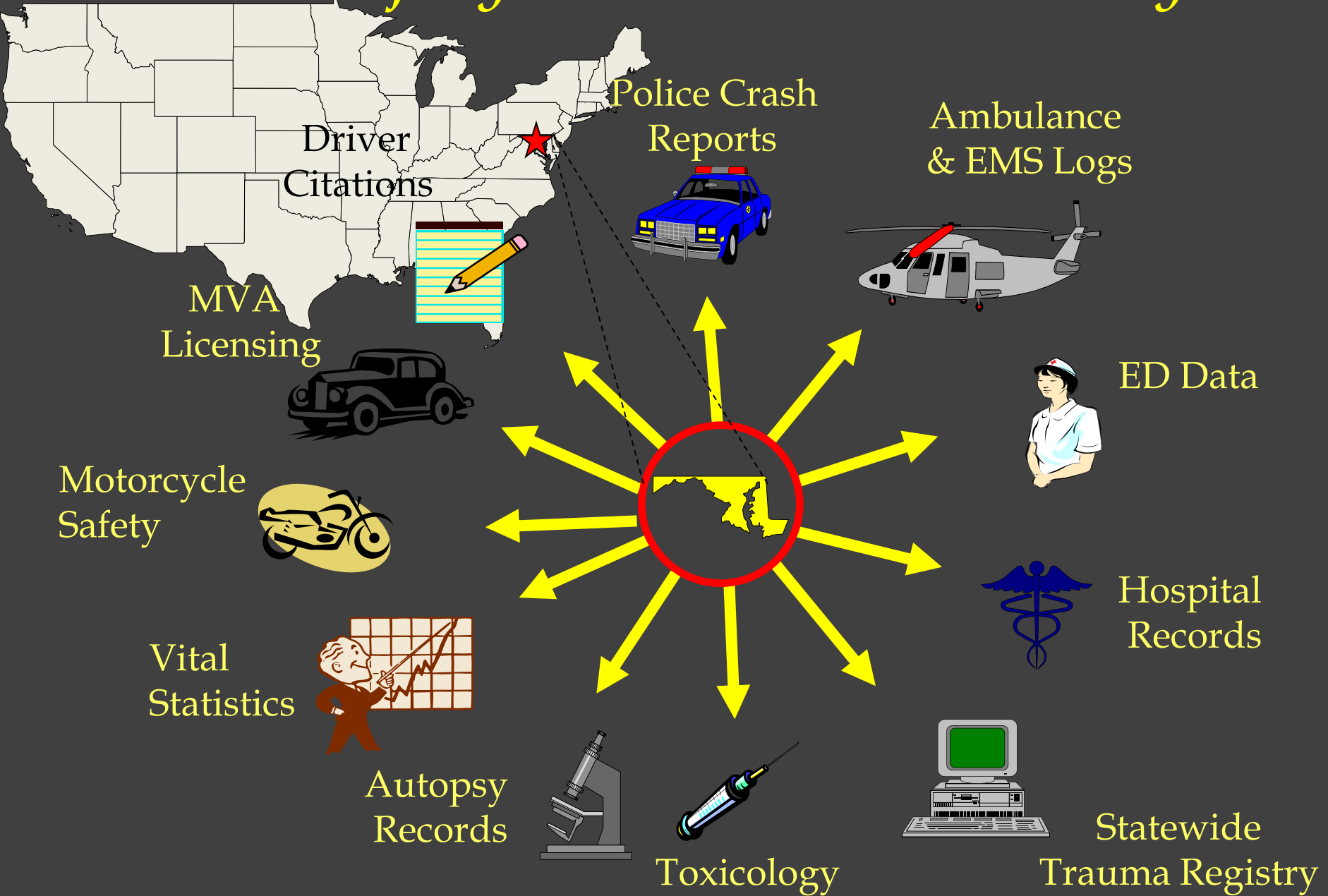
Cindy Burch, MPH
Epidemiologist
cburch@som.umaryland.edu

Timothy Kerns, MS
Epidemiologist
tkerns@som.umaryland.edu



*Charles "McC." Mathias, Jr., National Study Center
for Trauma and Emergency Medical Systems*

Available Injury Data Sources in Maryland



Maryland Crash Data 2007 – 2011

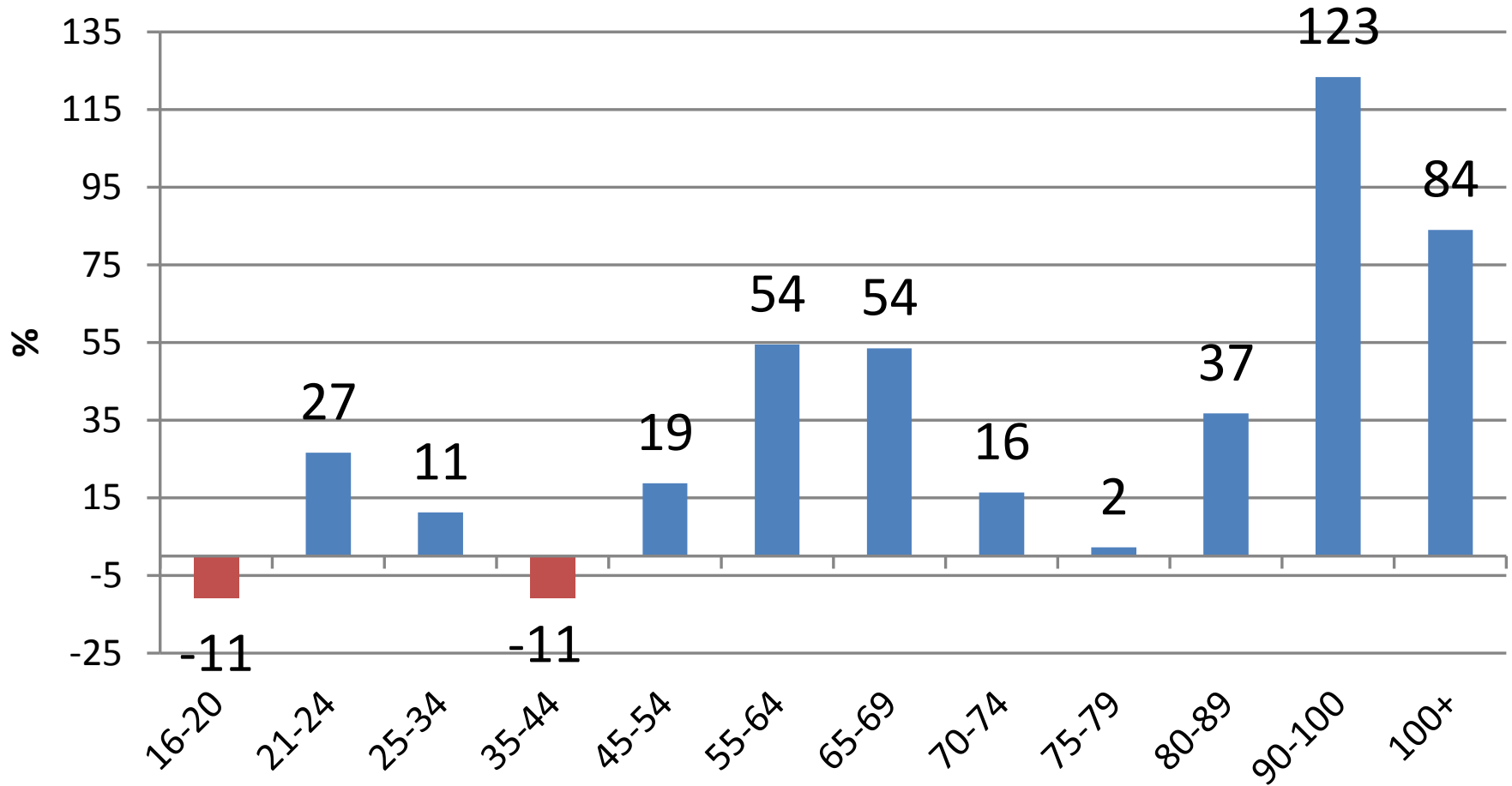
Objectives

- Statewide *Older Driver* Crash Summary
- *Older Driver* crash & injury characteristics
- CIREN Case Review

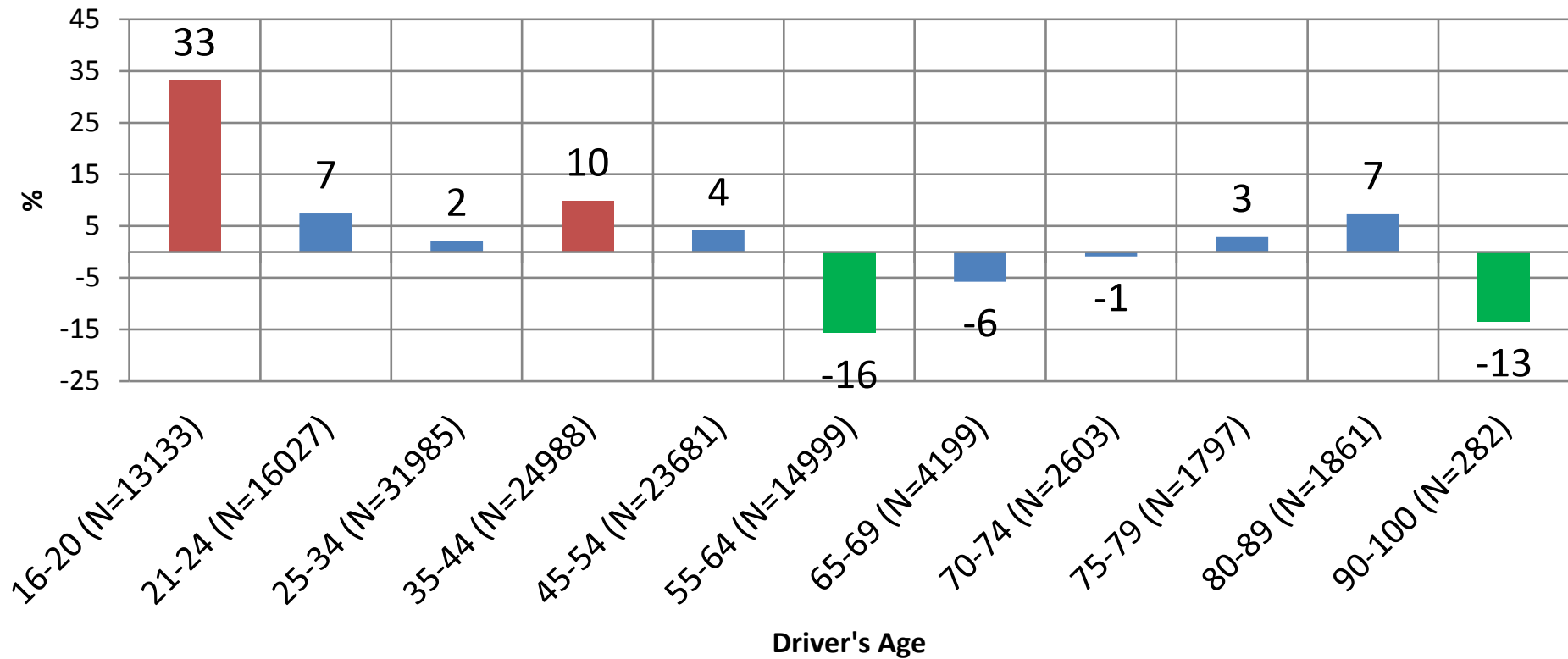
Statewide *Older Driver* Crash Summary, 2007-2011



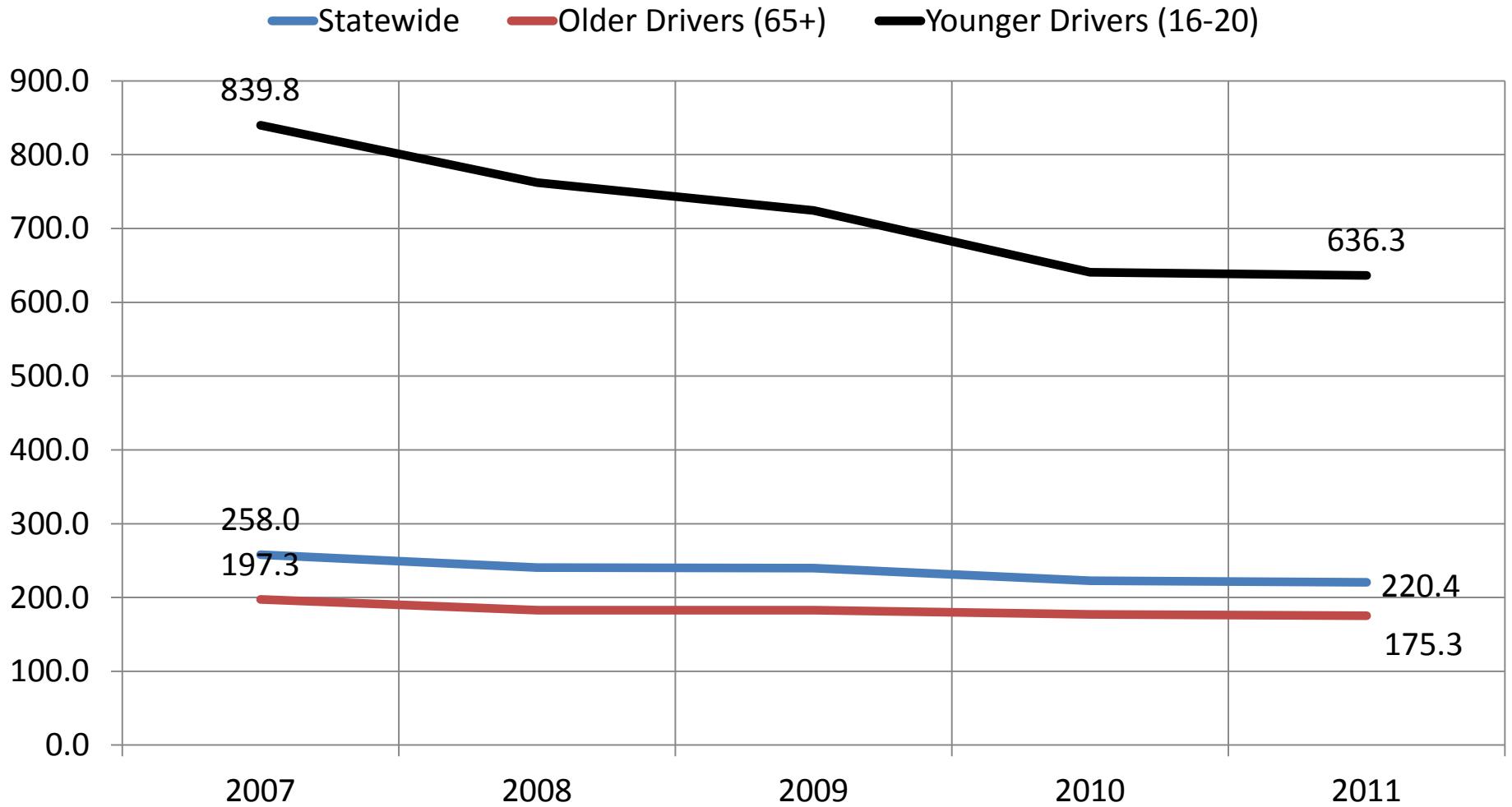
Licensed Drivers by Age- Percentage of Change 2000-2012



Percentage of Increase/Decrease of Total Crashes by Age from 2009 to 2011



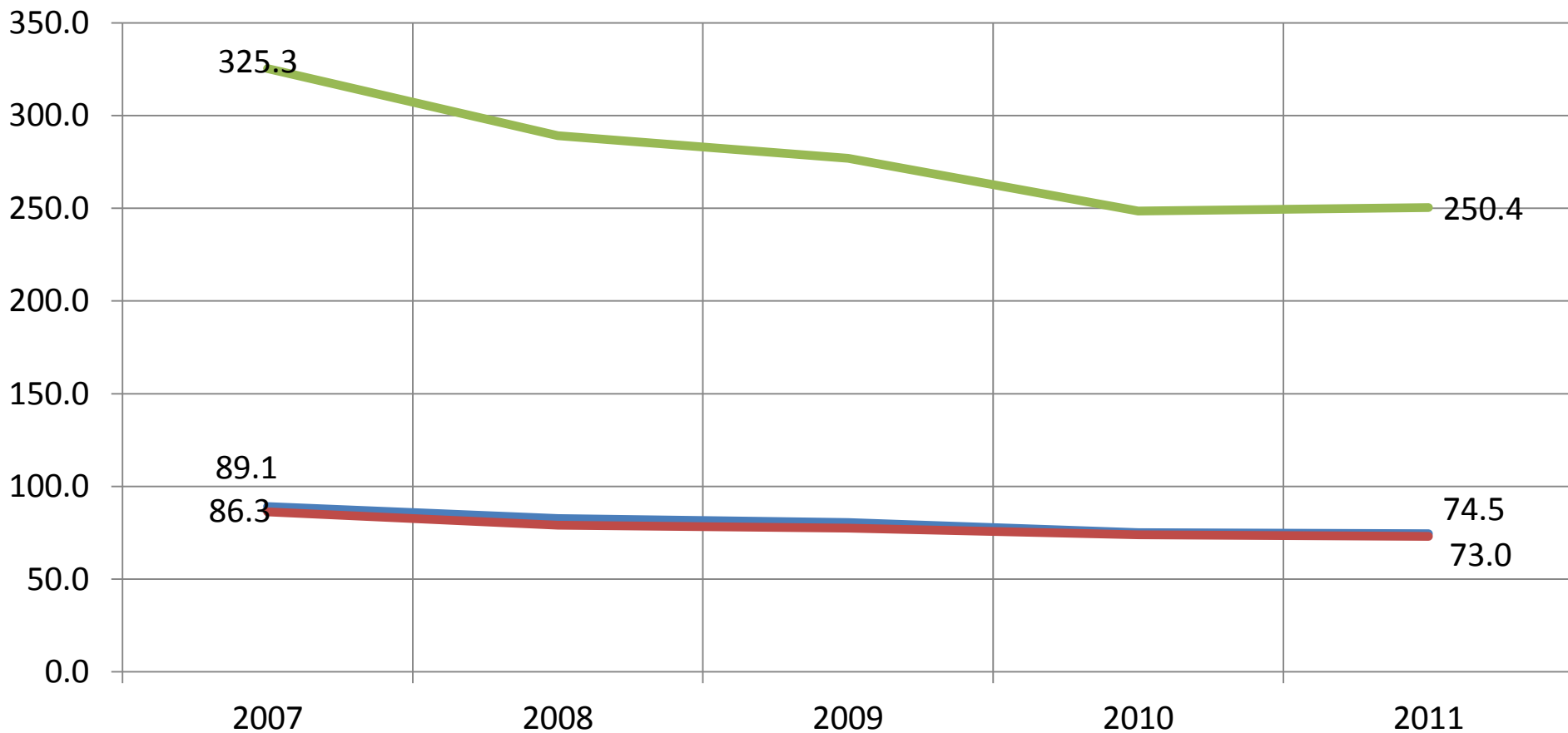
Crash Involvement Rate per 10,000 Licensed Drivers by Driver Age and Year, 2007-2011



Older Drivers have the lowest crash involvement rate per 10,000 licensed drivers.

Injury Crash Involvement Rate per 10,000 Licensed Drivers by Driver Age and Year, 2007-2011

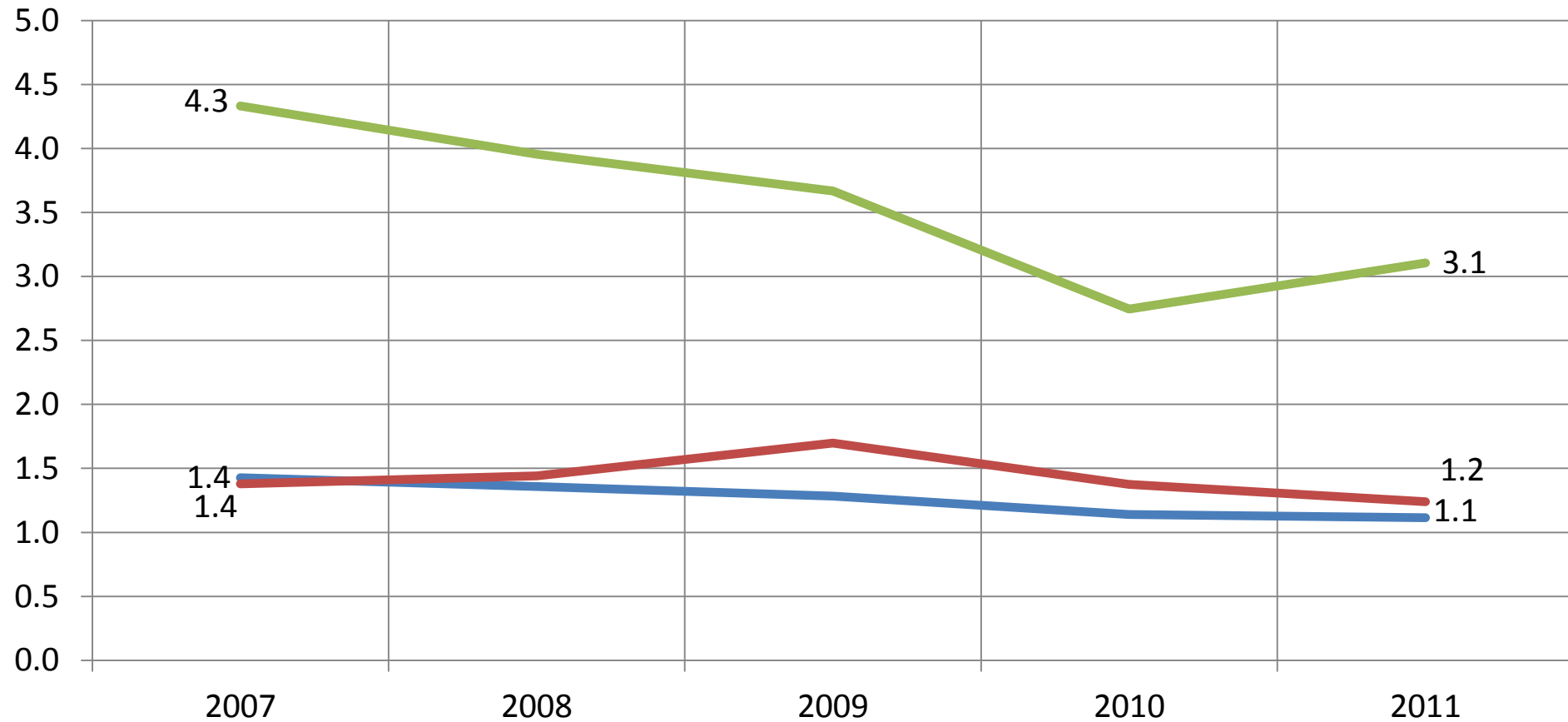
Statewide Older Drivers (65+) Younger Drivers (16-20)



The Older Driver injury crash involvement rate is almost the same as the statewide rate.

Fatal Crash Involvement Rate per 10,000 Licensed Drivers by Driver Age and Year, 2007-2011

Statewide Older Drivers (65+) Younger Drivers (16-20)



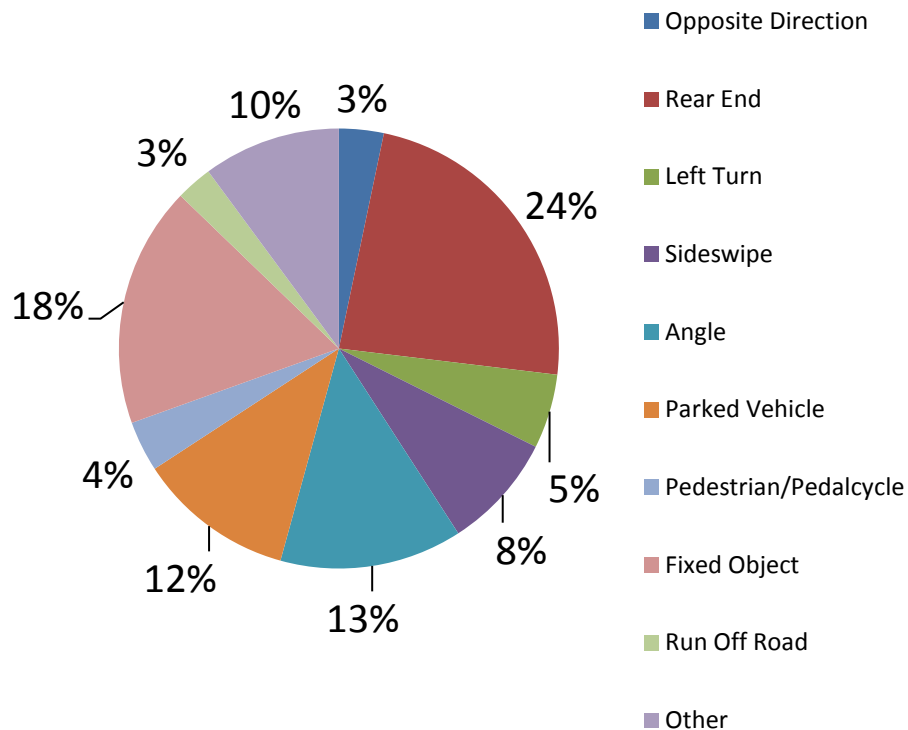
The Younger Driver fatal crash involvement rate has declined over the past 5 years.

2007 & 2011 Comparison of Older Driver Crashes

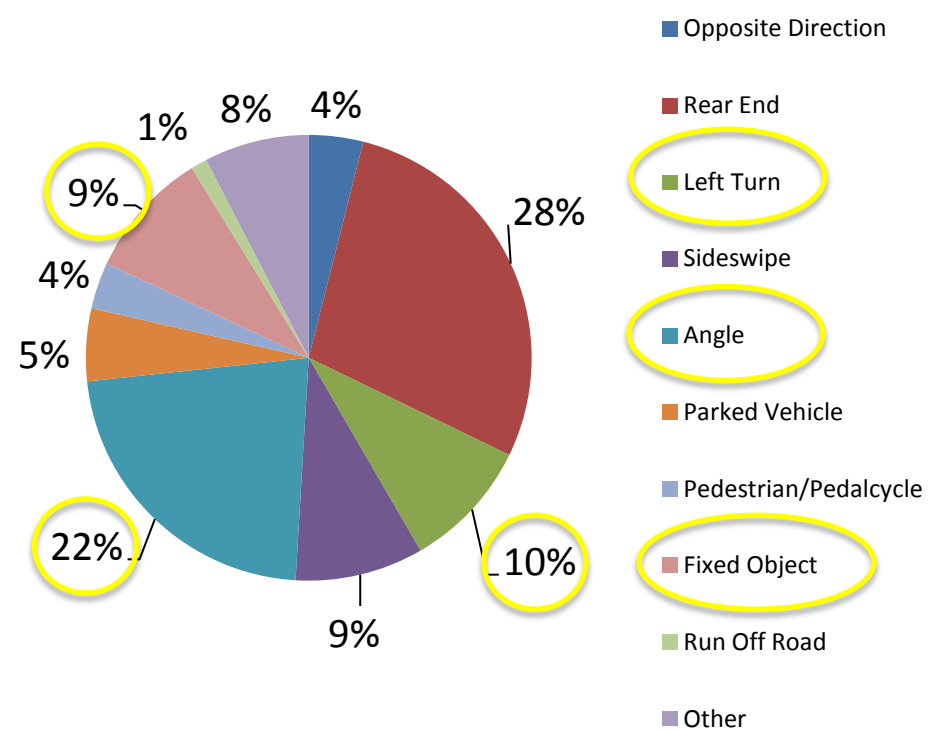
	Total Crashes		
2007	7,357		
2011	4,917		
% Change (Approx.)	- 33.2%		

Average Crash Type Percentages by Age, 2007-2011

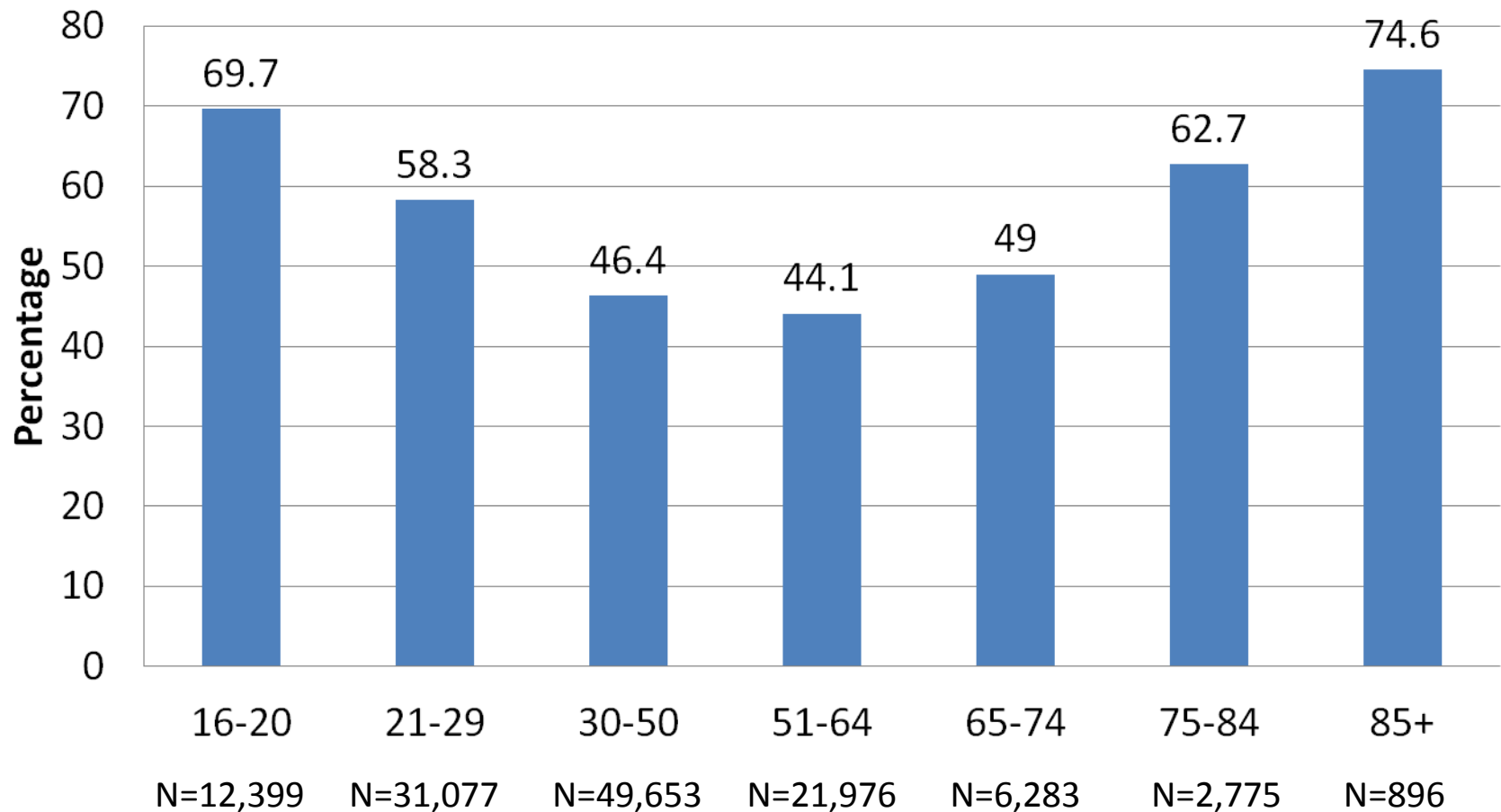
**All Crash Types
(N=78,016)**



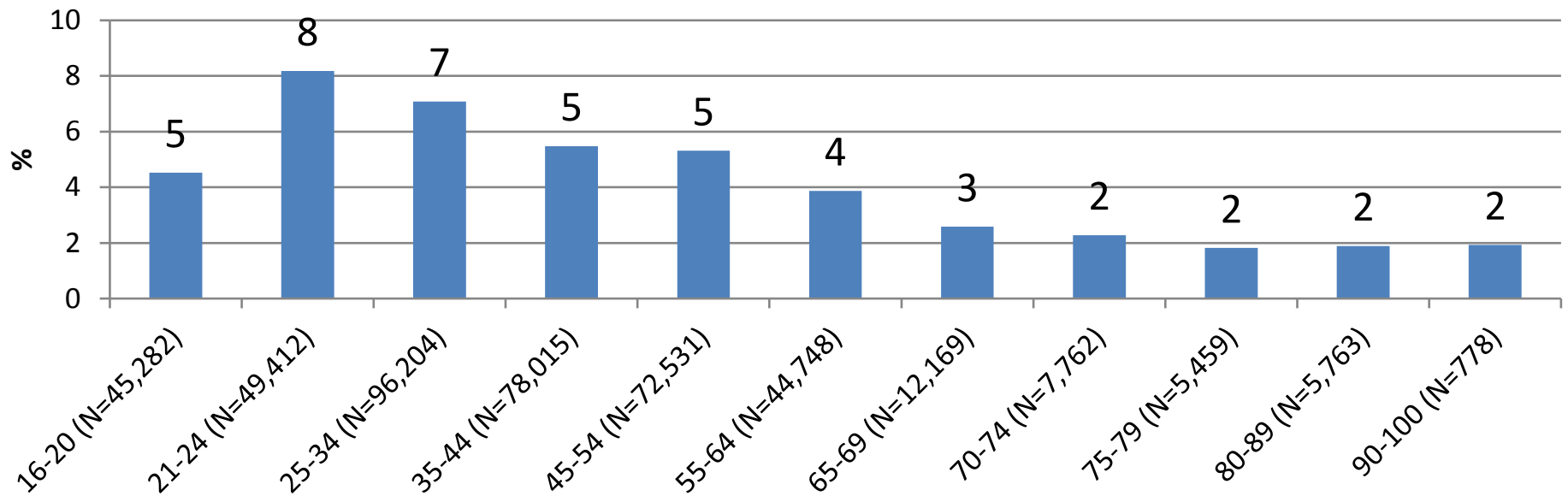
**Older Driver Crash Types
(N=8,483)**



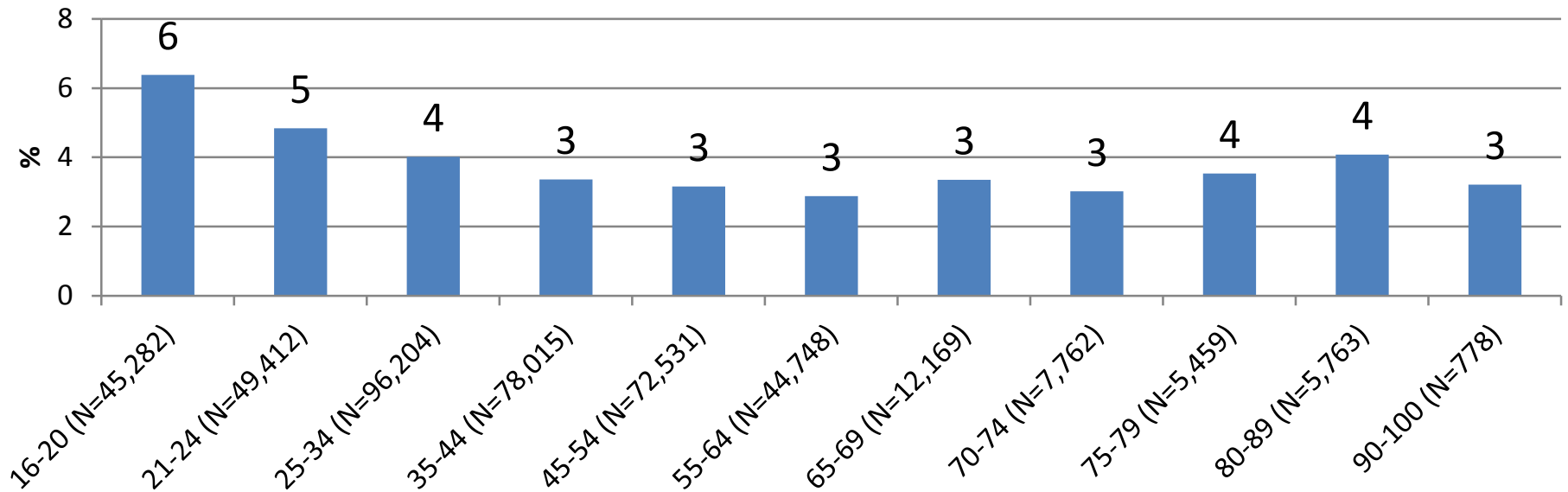
Percentage of Drivers Reported At-Fault by Age Group, 2011



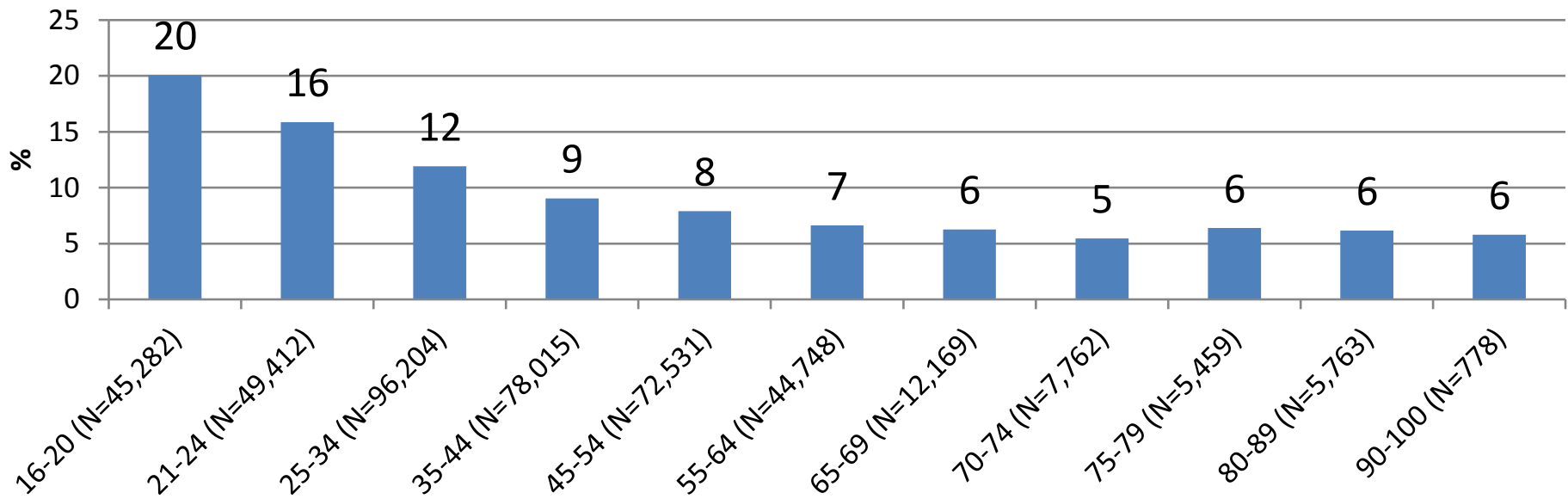
Driver Impaired as a Contributing Factor of Crash by Age, 2009-2011



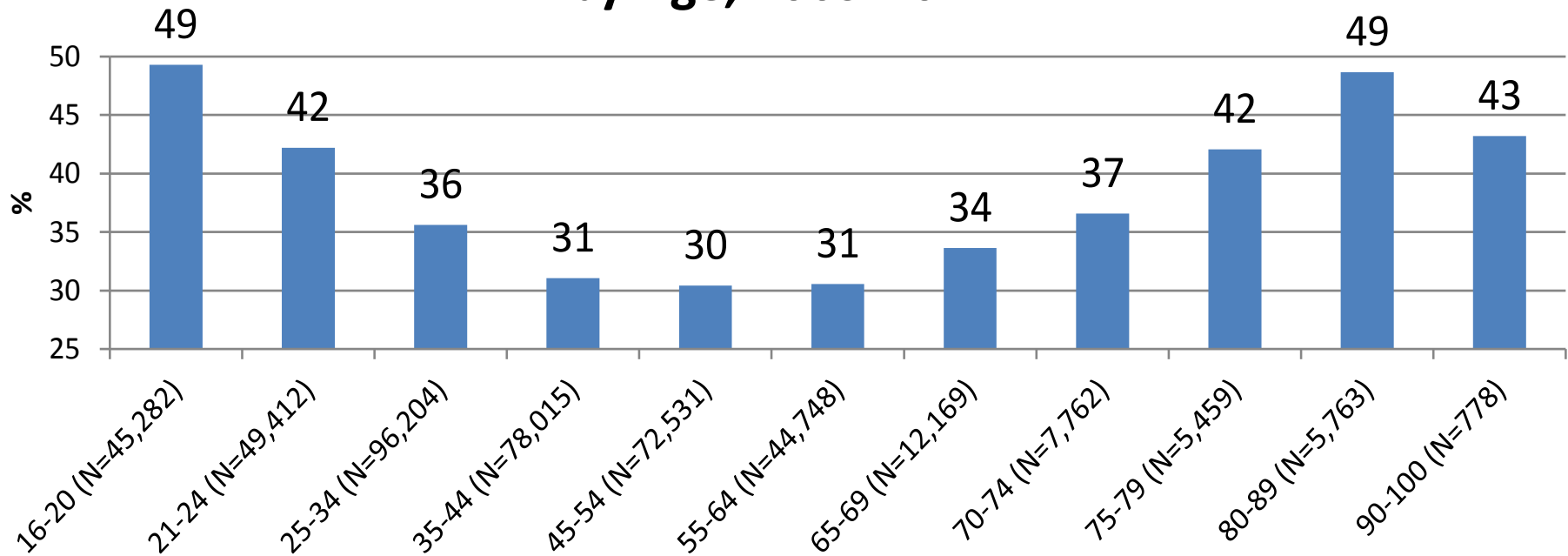
Aggressive Driver as a Contributing Factor of Crash by Age, 2009-2011



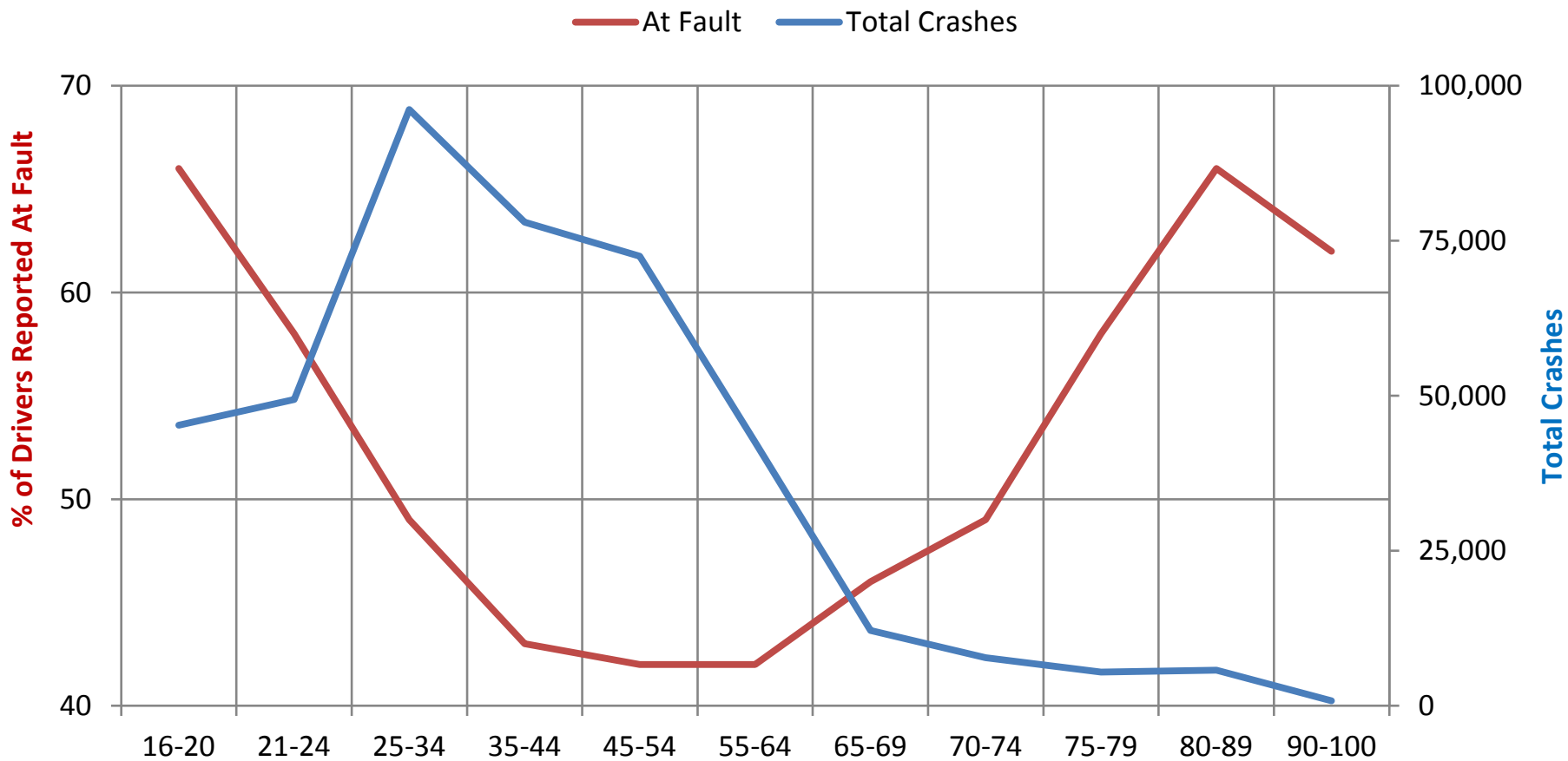
Speeding as a Contributing Factor of Crash by Age, 2009-2011



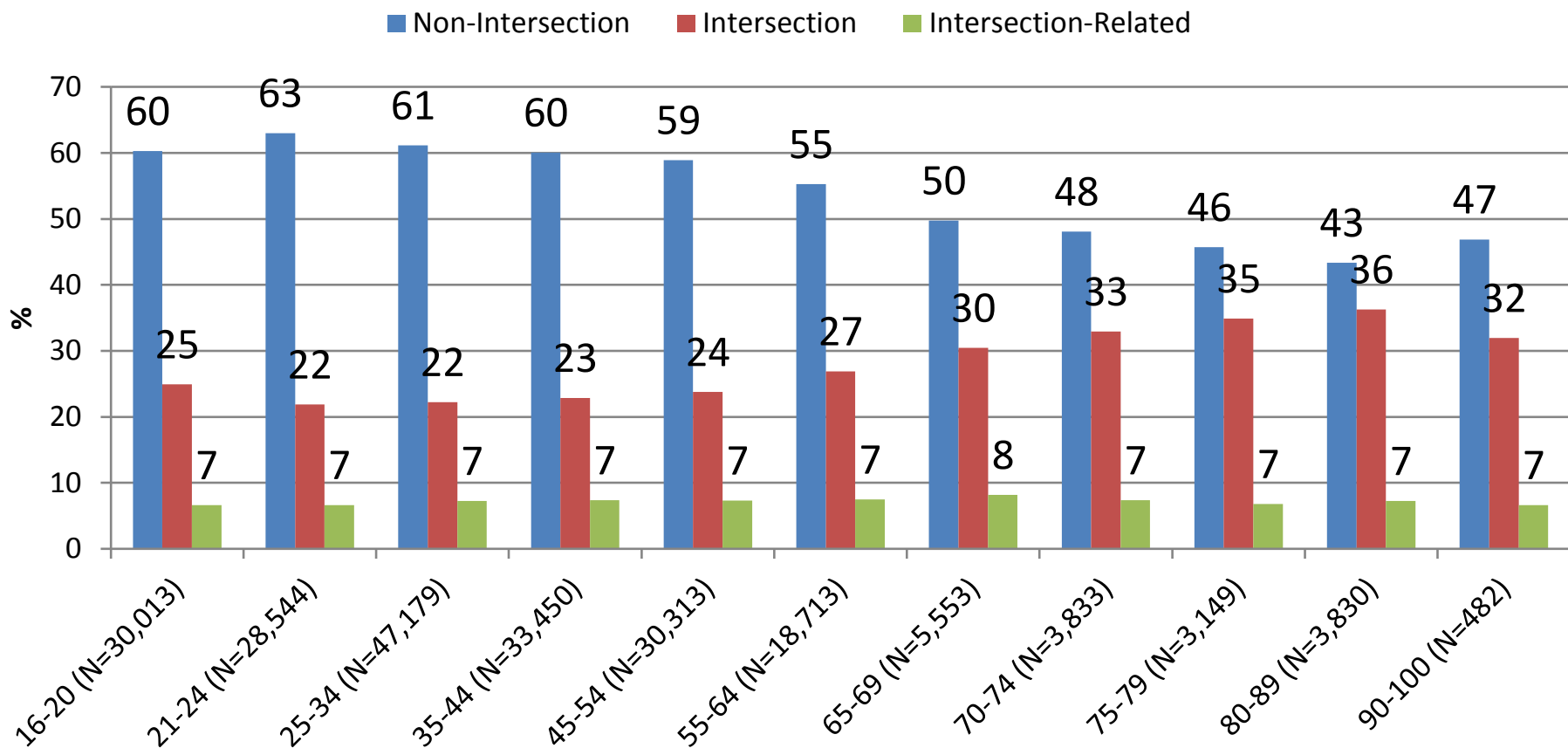
Inattentive Driver as a Contributing Factor of Crash by Age, 2009-2011



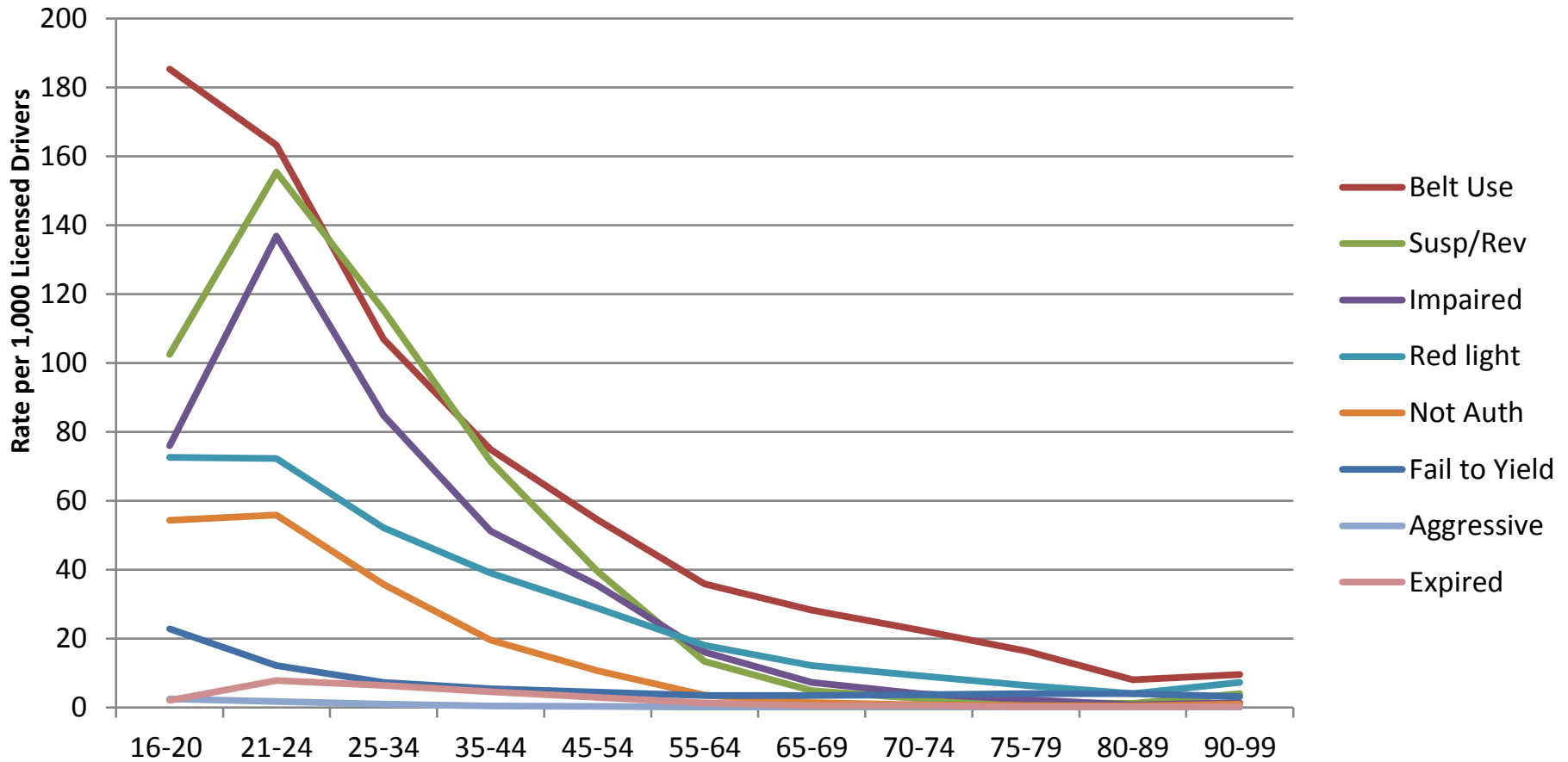
Total Crashes v. Reported At Fault by Age, 2009-2011



Intersection Type by At-Fault Driver's Age, 2009-2011

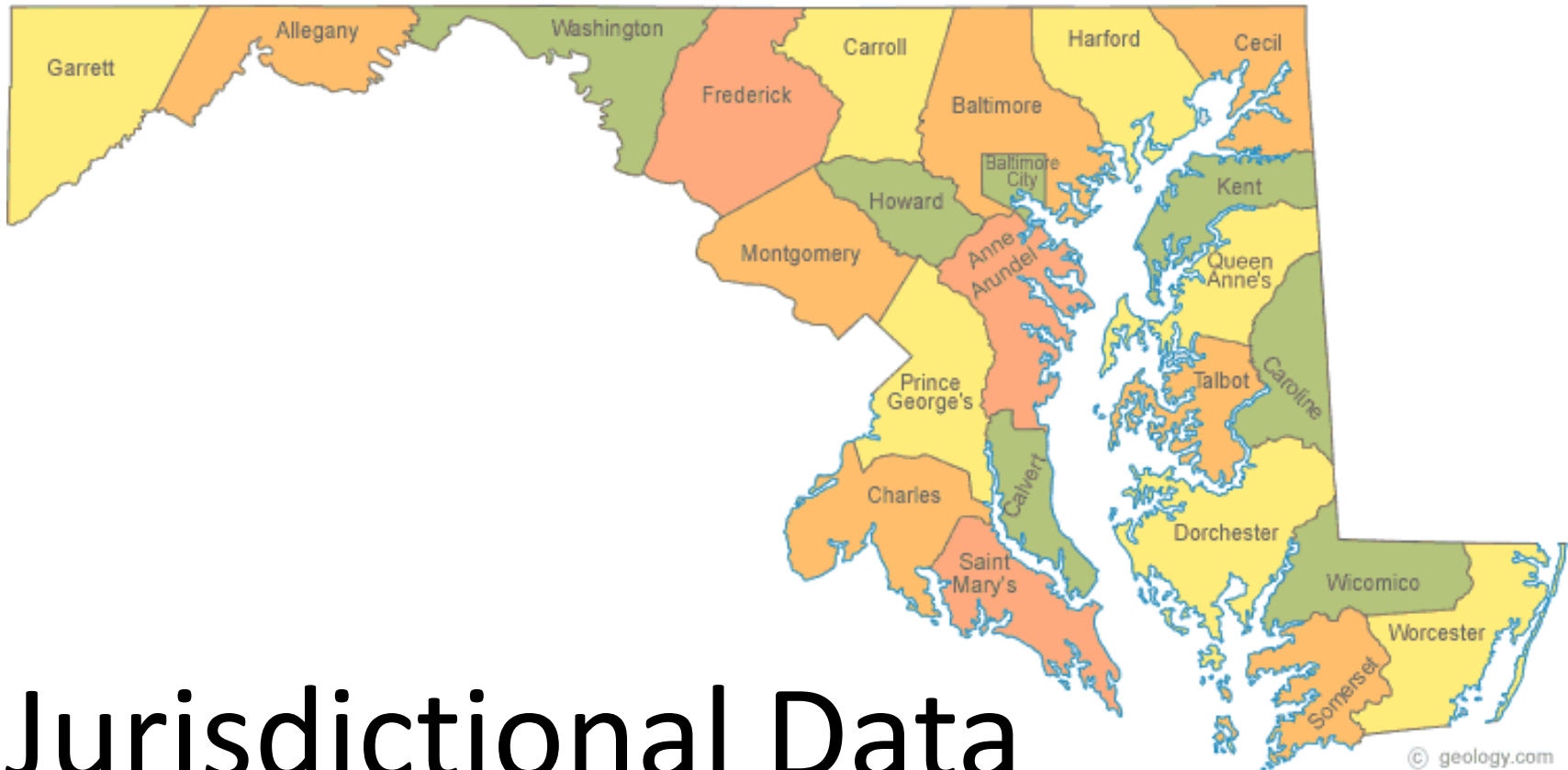


Citation Rate by Age, 2009-2011

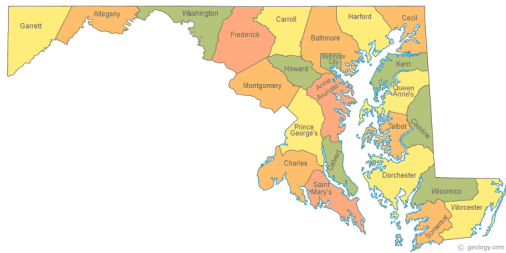


Older Driver Fatal Crash & Injury Data

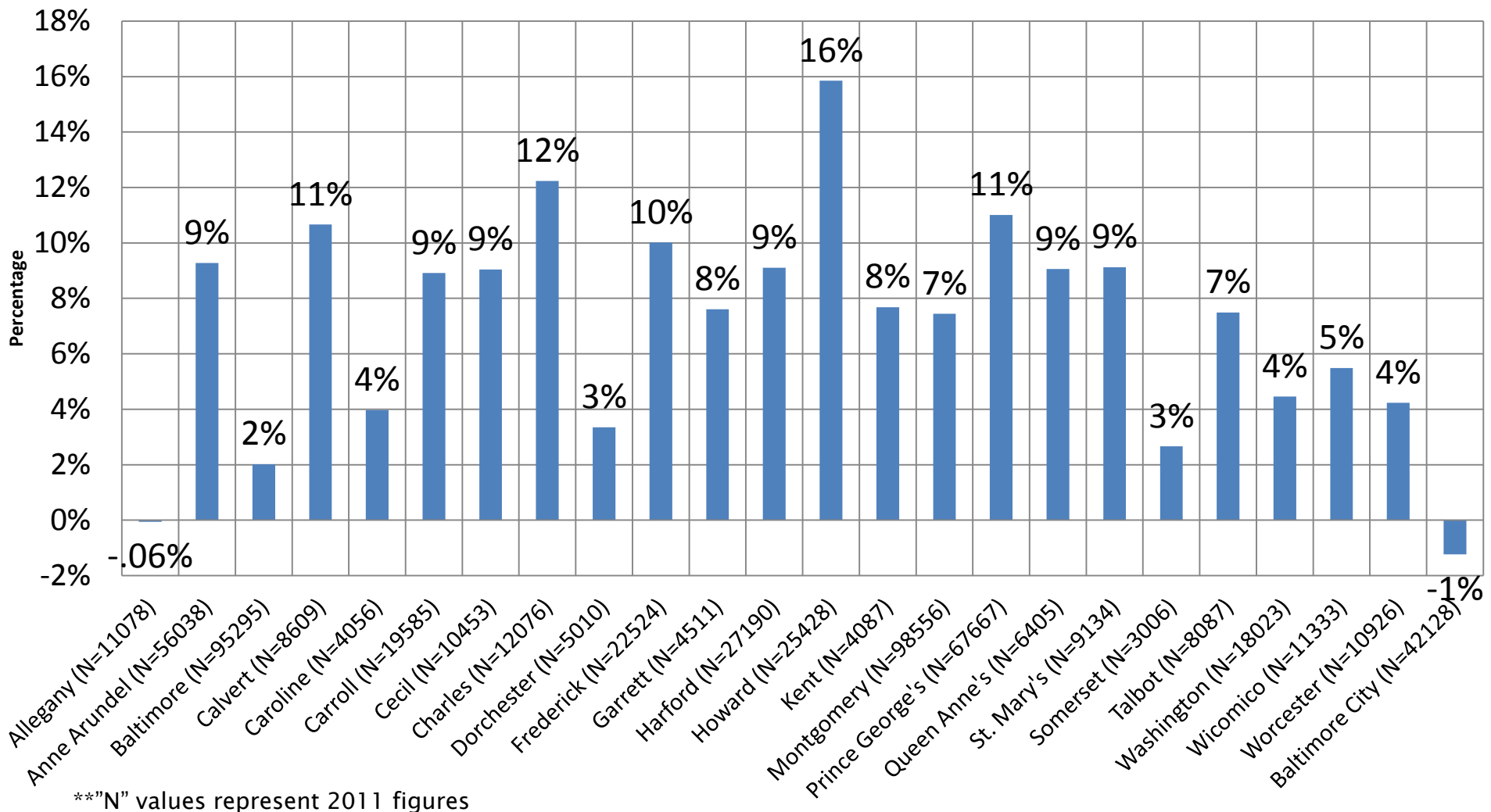




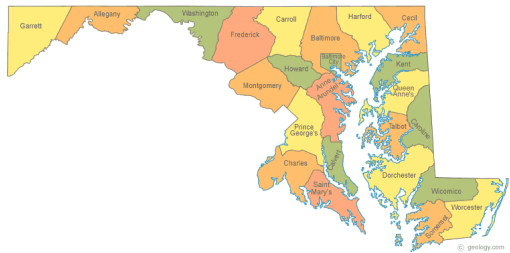
Jurisdictional Data



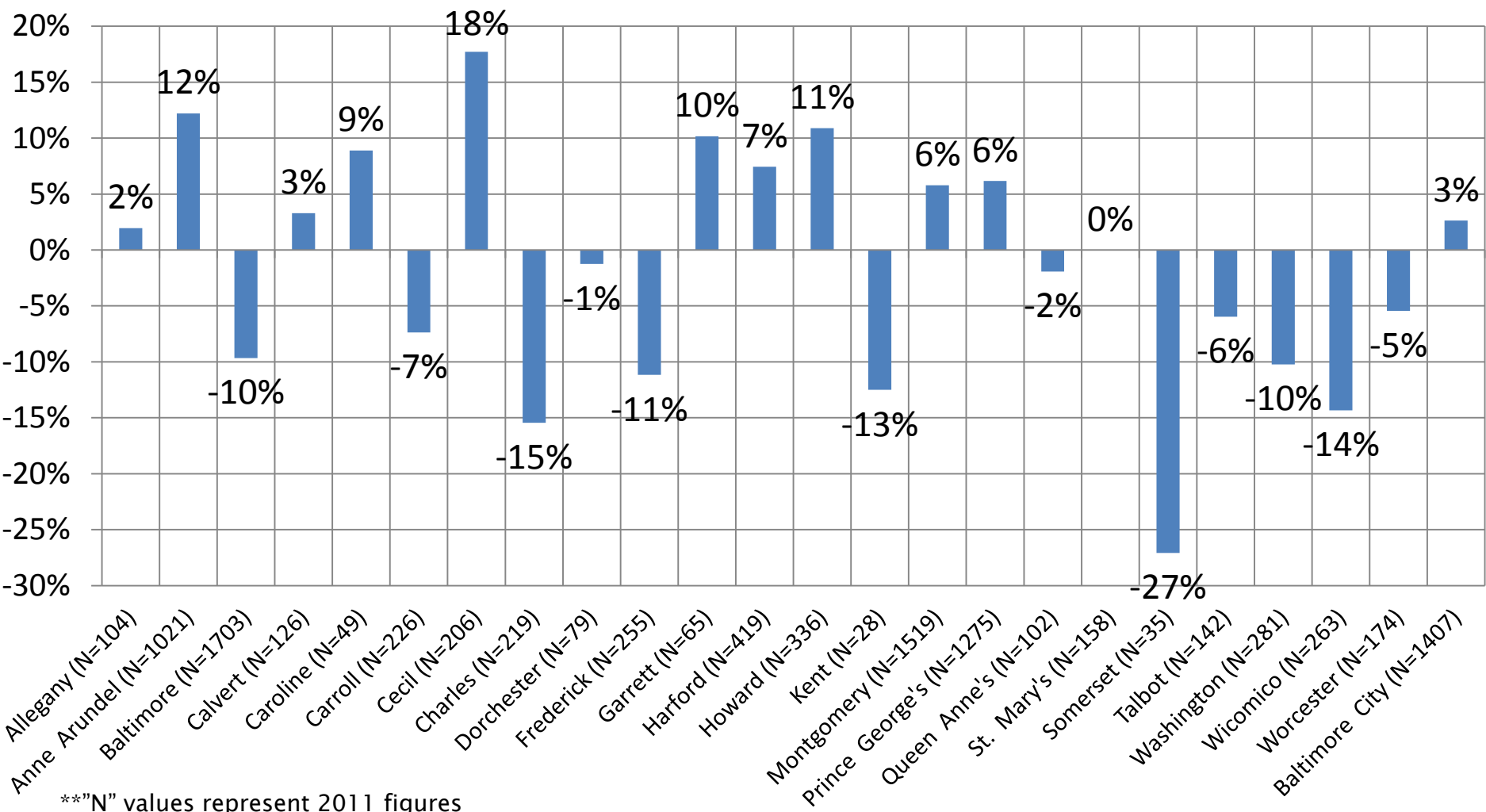
Percent Change in Older (65+) Licensed Drivers by Jurisdiction, 2007 - 2011



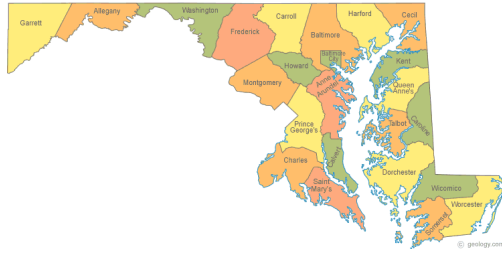
**"N" values represent 2011 figures



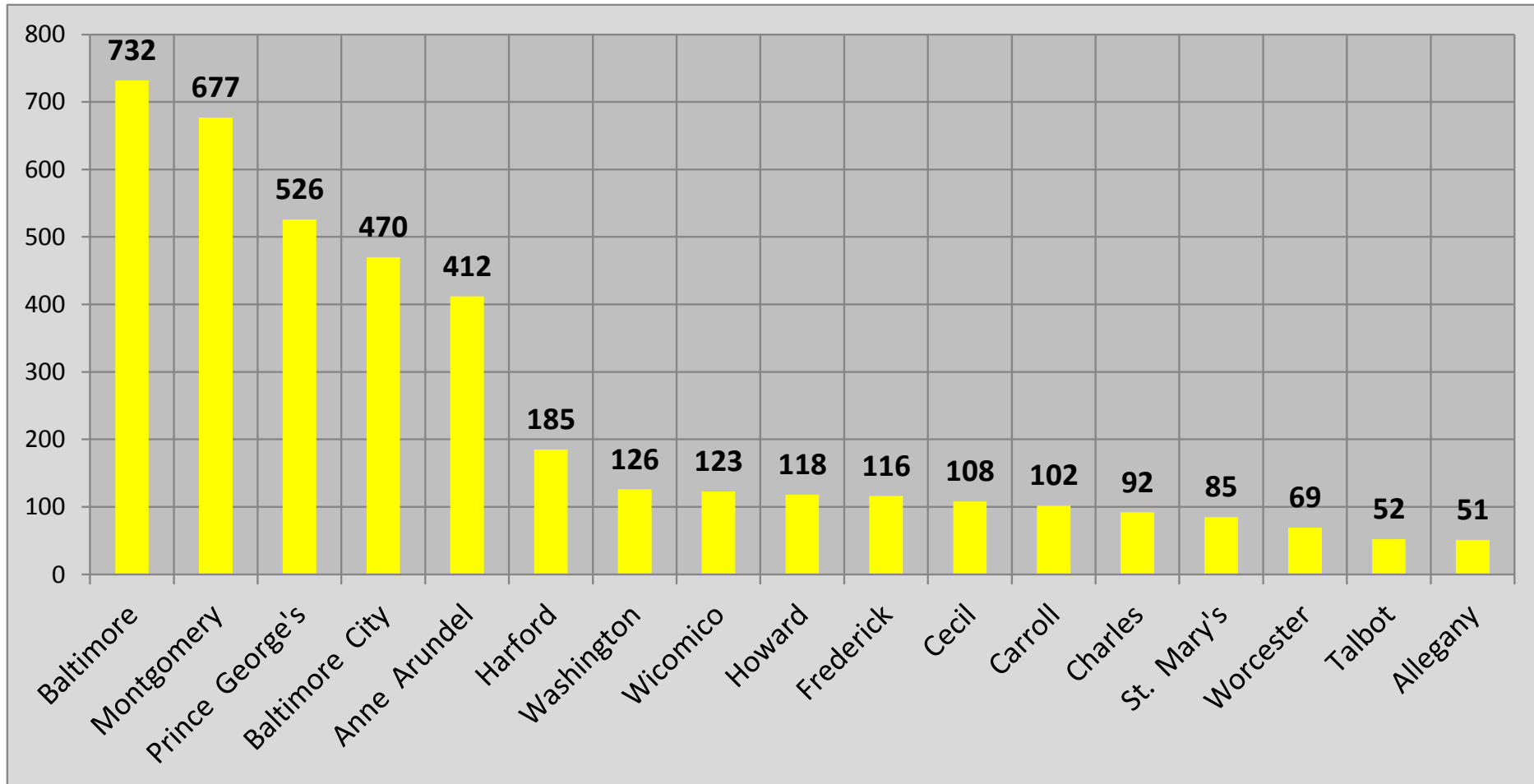
Percent Change in Older (65+) Driver Crashes by Jurisdiction, 2007 - 2011



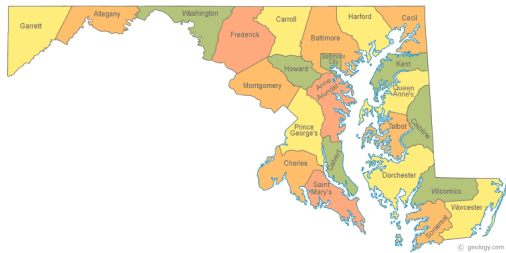
**"N" values represent 2011 figures



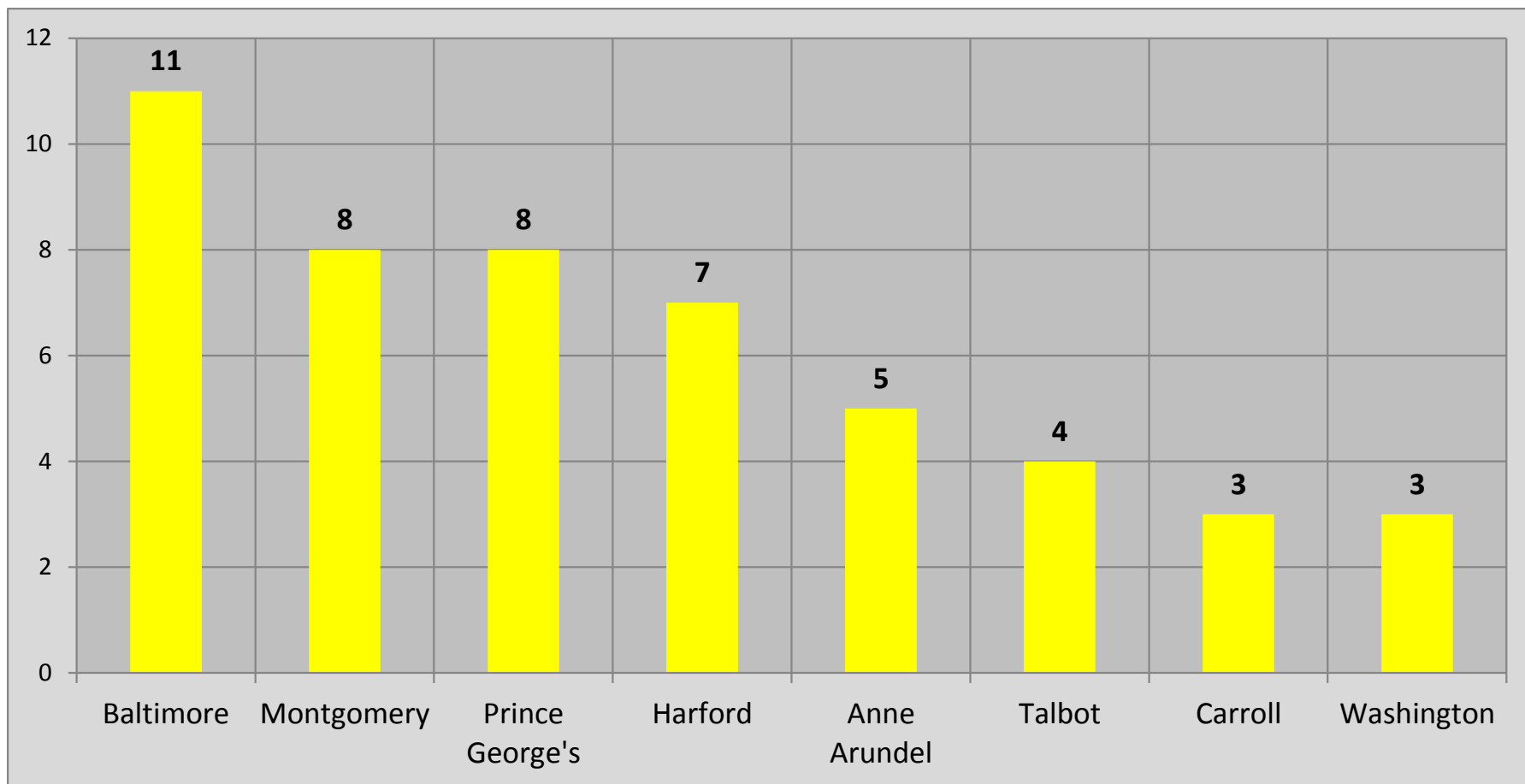
Number of Older Driver Injury Crashes by Jurisdiction, 2011 (N=4,244)



**Jurisdictions not listed had less than 50 injury crashes



Total Number of Older Driver Fatal Crashes by Jurisdiction, 2011 (N=72)



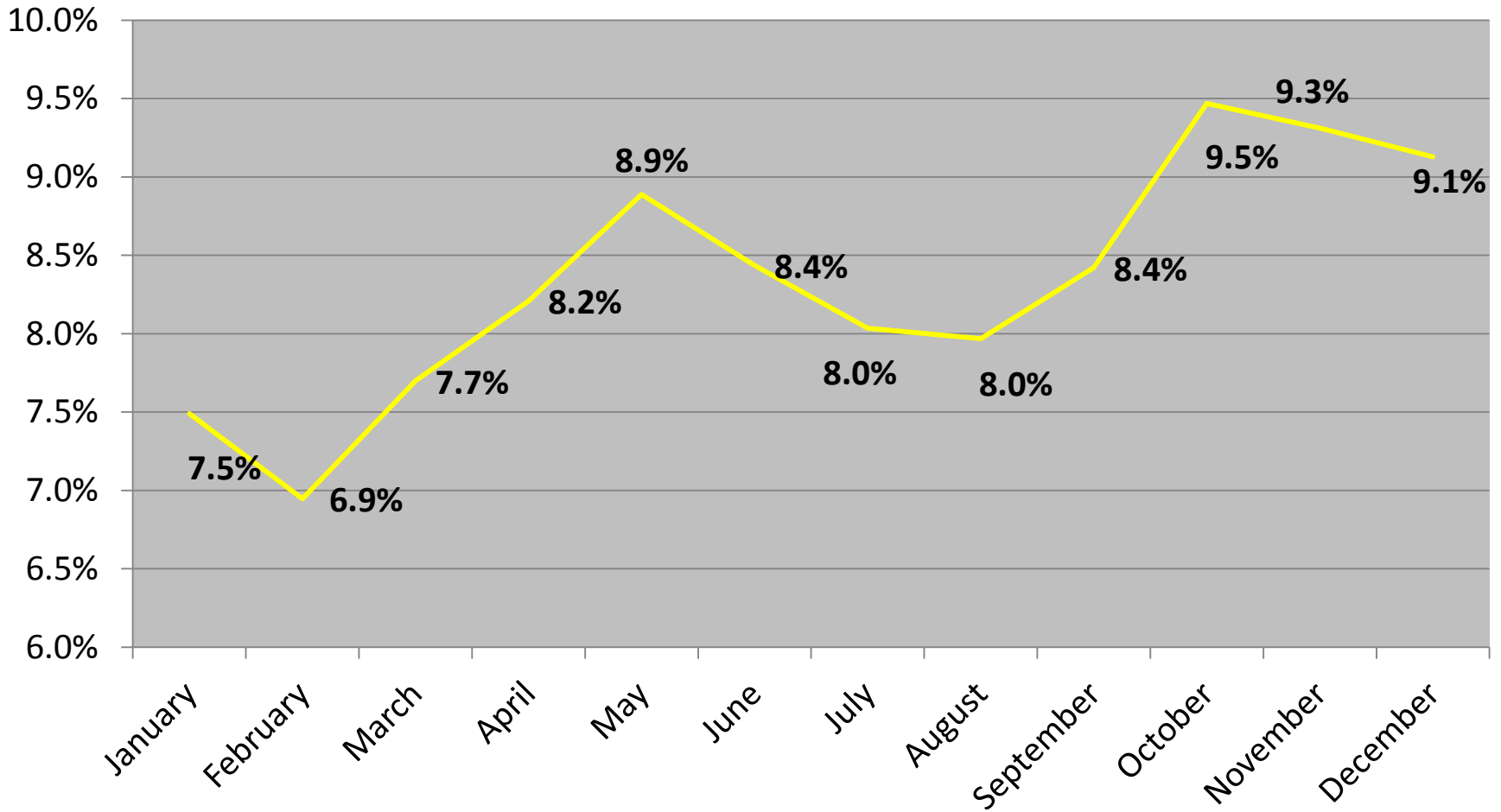
**Jurisdictions not listed had less than 3 fatal crashes



Monthly Data

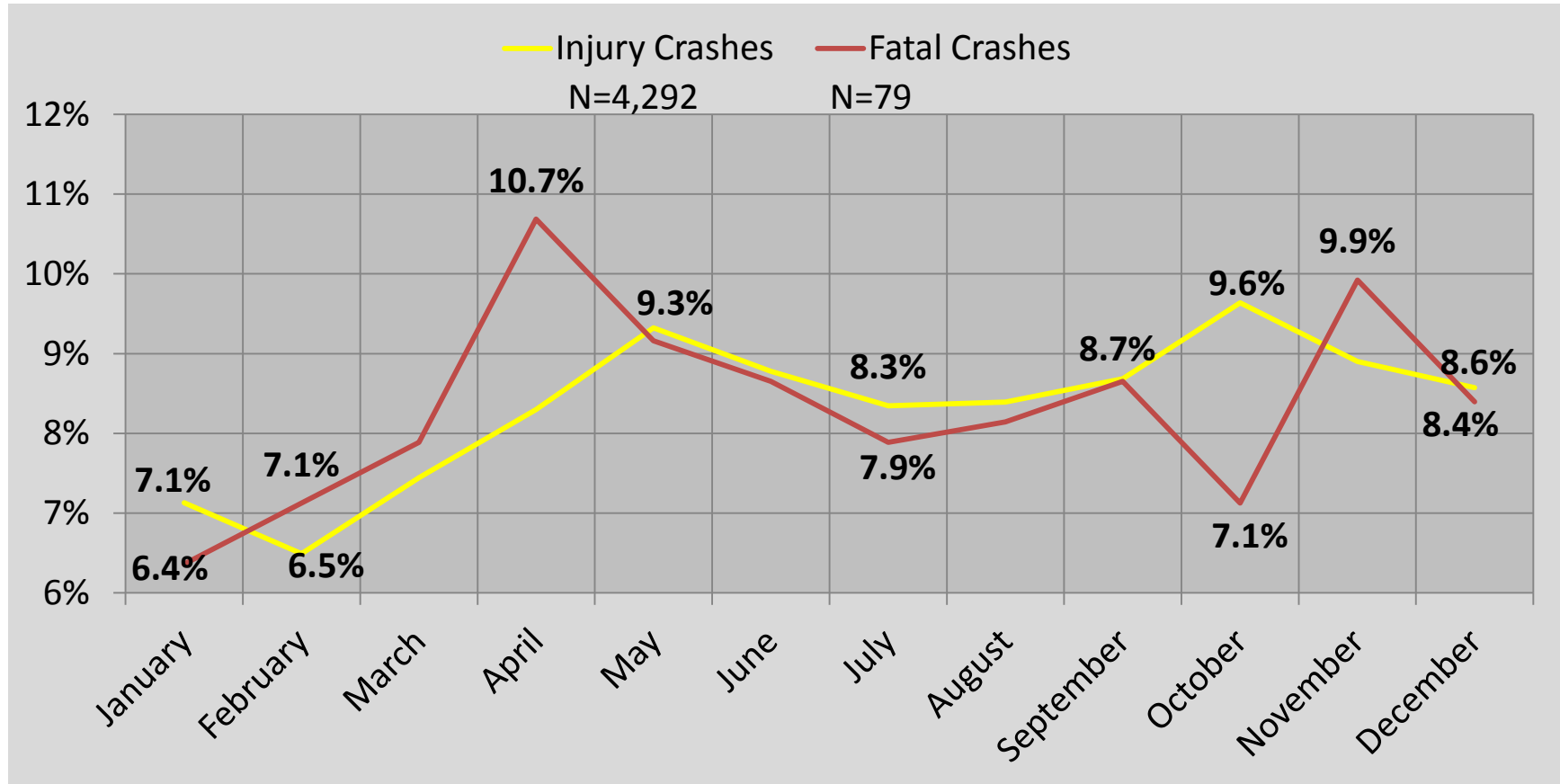


Average Older Driver Crash Percentages by Month 2007-2011 (N=10,083)





Average Older Driver Injury Crash & Fatal Crash Percentages by Month 2007 – 2011



Older Driver fatal crashes occur more frequently in April, October and November, while injury crashes are consistent from May through December.

Fatal v. Injury Crash Percentage - Comparison by Month & Age, 2007 - 2011

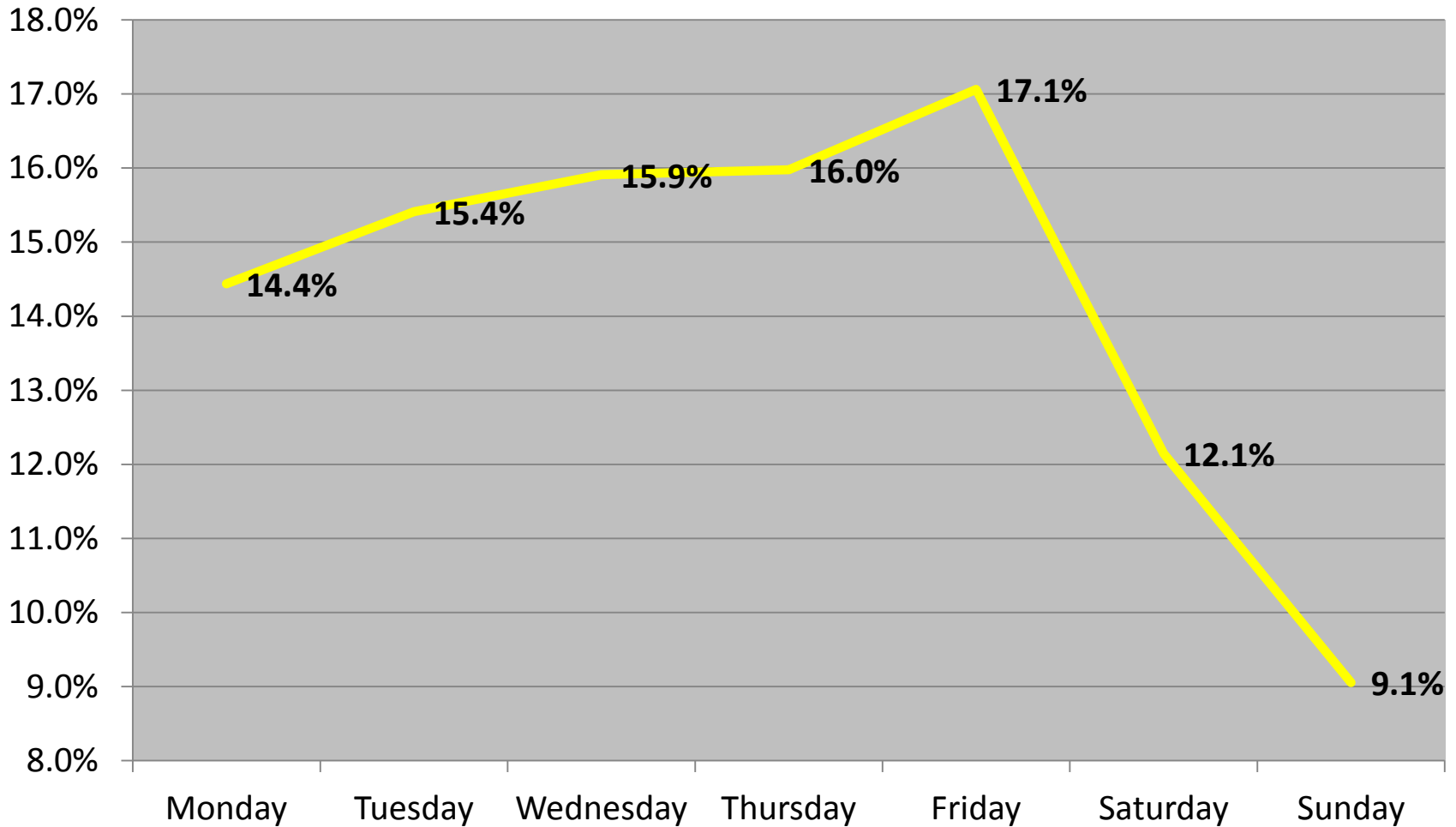
1.		
2.		
3.		
4.		
5.		
6.		
7.		
8.		
9.		
10.		
11.		
12.		



Day of Week Data

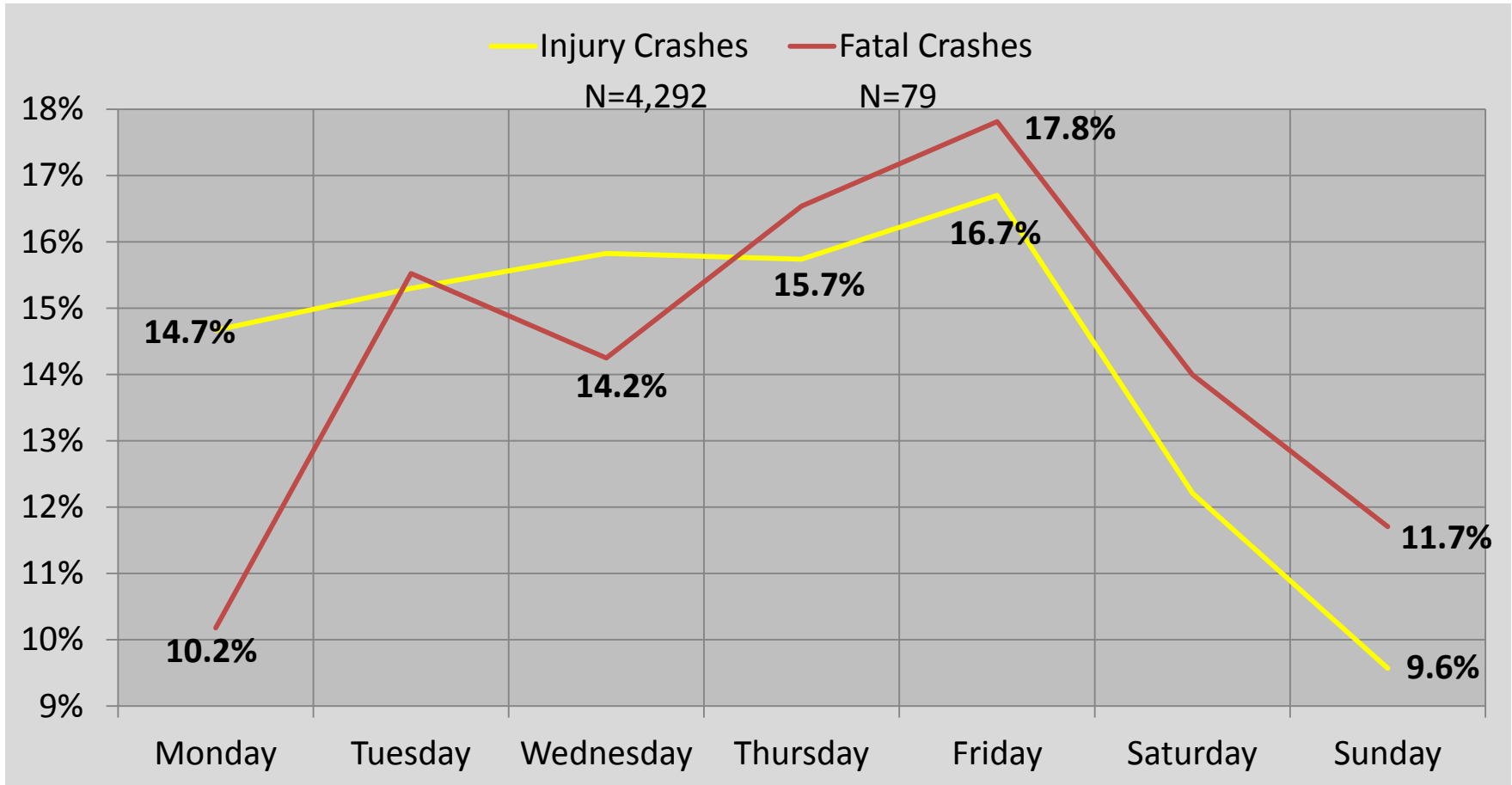


Average Older Driver Crash Percentages by Day of Week 2007-2011 (N=10,083)





Older Driver Injury Crash & Fatal Crash Percentages by Day of Week, 2007 – 2011



All Older Driver crashes, injury and fatal, are less frequent on the weekends.

Fatal v. Injury Crash Percentage - Comparison by Day & Age, 2007 - 2011

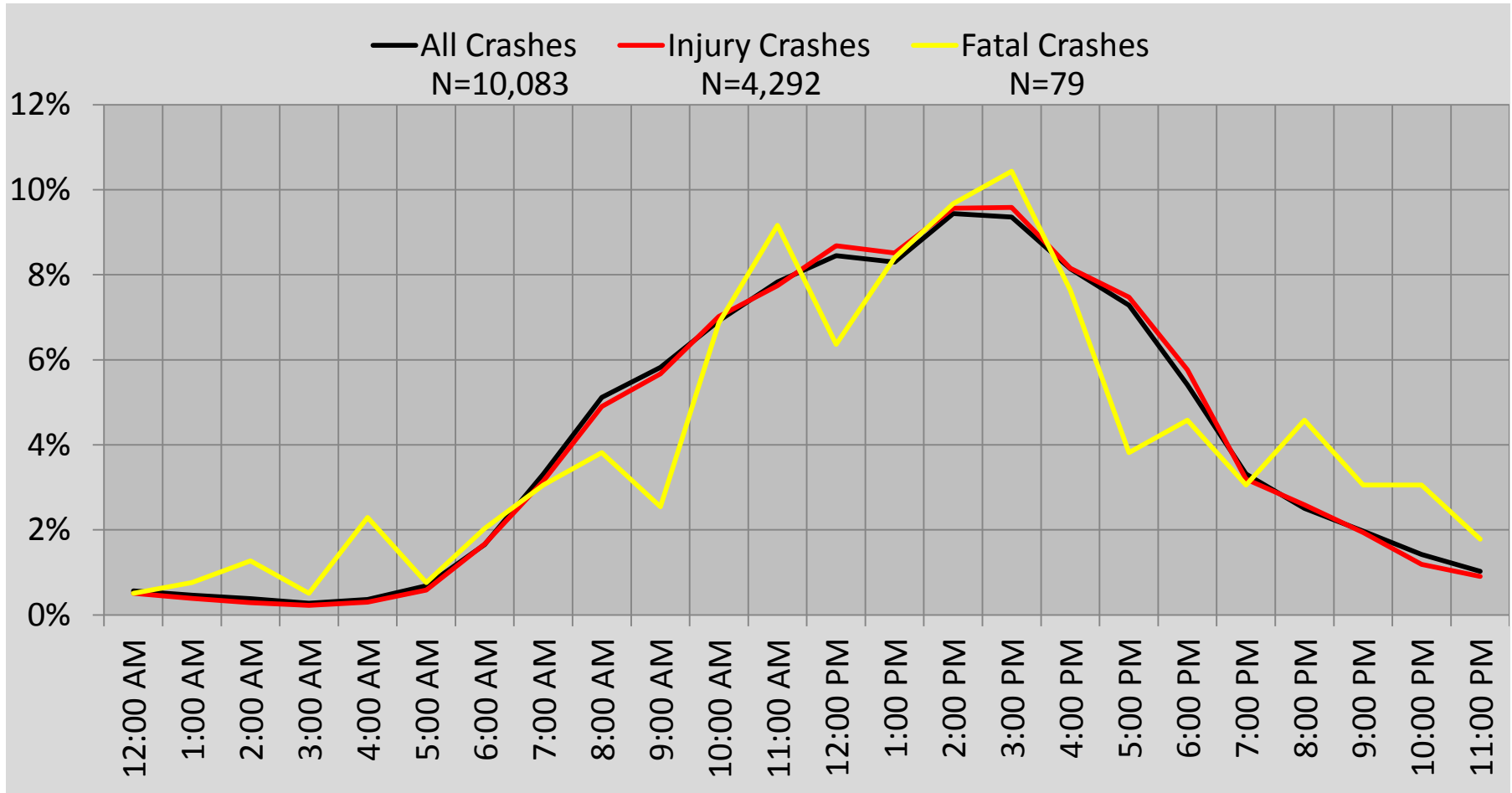




Time of Day Data



Older Driver Injury Crash & Fatal Crash Percentages by Time of Day, 2007 - 2011





Fatal v. Injury Crash Percentage - Comparison by Time of Day & Age, 2007 - 2011

1.		
2.		
3.		
4.		
5.		
6.		

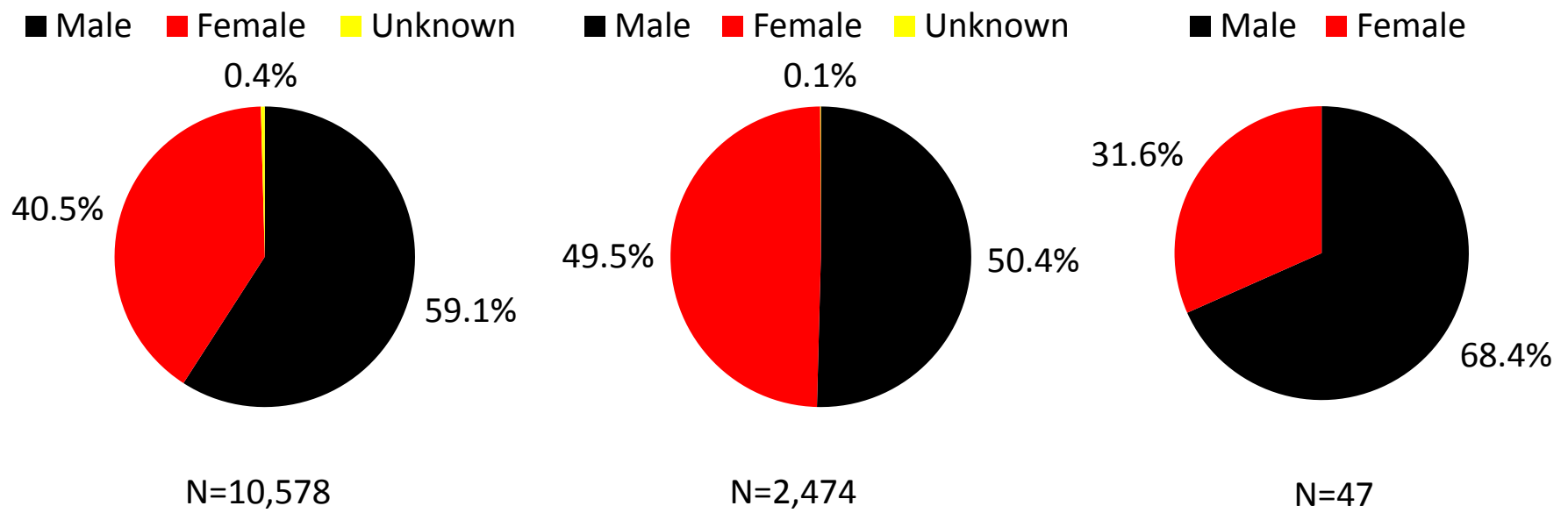


Gender

Data



Crash Totals, Injury Crashes & Fatal Crashes by Driver Gender, 2007-2011



Total Crashes: More male Older Drivers are involved in crashes than females.

Injury Crashes: Gender of Older Drivers involved in injury crashes is equally distributed.

Fatal Crashes: More male Older Drivers are involved in fatal crashes than females.

